



🏠 2 🛏️ 4 🚿 2 🚗 2

Moonta

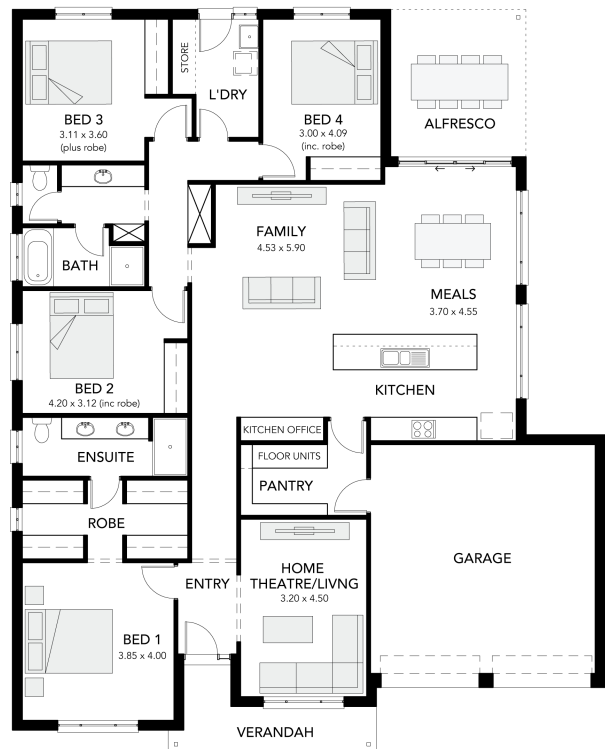
Lot 102 Central Avenue

BLOCK SIZE: 961.00m²
HOUSE SIZE: 248.97m²

HOUSE & LAND PACKAGE
\$575,549*

PACKAGE INCLUSIONS:

- \$10K discount applied
- 2700mm high ceilings
- Essastone benchtops
- 900mm Westinghouse kitchen appliances
- Ducted reverse Cycle air-conditioning
- Single span panel lift garage door
- Portico at front elevation with rendered piers & rendered infill
- Alfresco with slab and tiles
- Carpet to bedrooms
- Timber floors to remainder of home
- Colorbond roofing upgrade
- Insulation to external and internal walls and ceiling
- NBN provision
- Soil removal and generous footings allowance
- 25-year structural warranty
- 3-month maintenance



ENQUIRIES: Megan Charlton M: 0455 291 687 E: meganch@statesman-homes.com.au

*Conditions apply. Certain elevations may not match the particular floor plan published in this package and, as such, all floor plans and elevations are for illustration purposes only. Land subject to availability. We make no representation and, to the extent permissible at law, we disclaim all liability, as to the suitability of the land to build on, or the suitability of any house design, or otherwise. You must satisfy yourself of that by inspection, or by taking professional advice, or otherwise. Pricing is indicative only and based on standard costings. Price may vary depending on selections, engineering, council and utility requirements and adjustments to allowances. All packages subject to final council approval. Alan Hickinbotham Pty Ltd ABN 13 007 567 222, RLA 230557, Construction Services Australia Pty Ltd ABN 99 007 641 787, Building License G8969.