



🚗 2 🛏️ 4 🚿 2 🚗 0

**KENTUCKY ALFRESCO**

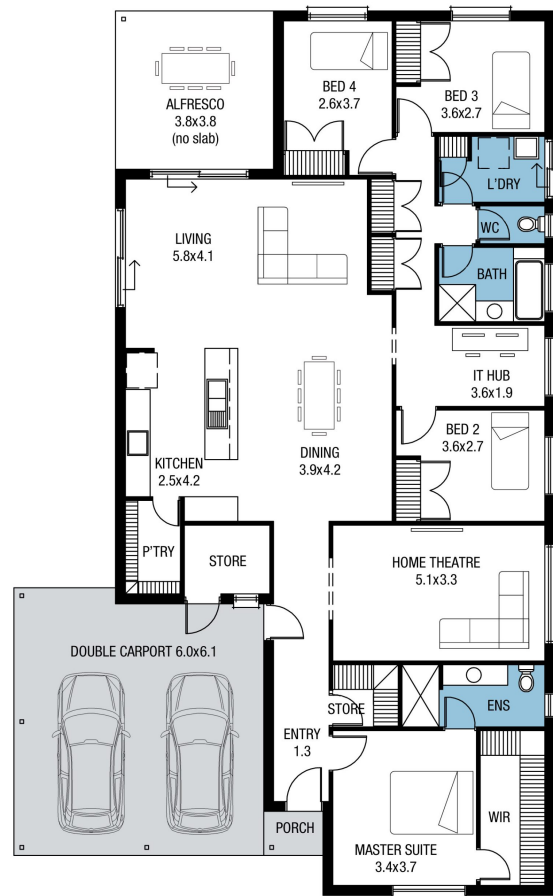
**Lot 222 Central Avenue**

**BLOCK SIZE: 795m<sup>2</sup>**  
**HOUSE SIZE: 240m<sup>2</sup>**

**HOUSE & LAND PACKAGE**  
**\$519,650\***

**PACKAGE INCLUSIONS:**

- \$10,000 House discount
- Frontage as selected or your choice
- Upgraded single span panel-lift door & remotes
- Upgraded to 2700mm ceiling height
- Flooring allowance (Carpets/Timber laminate)
- Ducted reverse cycle air-conditioning
- Flyscreens & locks to windows
- Insulation to external walls & ceiling
- 900mm high mirror to Ensuite & Bath
- Colorbond roof included
- Stain steel appliances to Kitchen
- Flat breakfast bar to Kitchen
- Overhead cupboards to Kitchen
- Dishwasher provision & microwave provision to kitchen
- FREE Square Set Cornices to Entry, Living and Dining
- FREE Milan Semi-Framed Shower Screens
- 3 Month Maintenance
- 25 Year Structural Guarantee
- Generous site works and footing allowance



**ENQUIRIES: Ashley Heffernan M: 0433 287 649 E: ashleyh@sahousingcentre.com.au**

\*Conditions apply. Certain elevations may not match the particular floor plan published in this package and, as such, all floor plans and elevations are for illustration purposes only. Land subject to availability. We make no representation and, to the extent permissible at law, we disclaim all liability, as to the suitability of the land to build on, or the suitability of any house design, or otherwise. You must satisfy yourself of that by inspection, or by taking professional advice, or otherwise. Pricing is indicative only and based on standard costings. Price may vary depending on selections, engineering, council and utility requirements and adjustments to allowances. All packages subject to final council approval. Alan Hickinbotham Pty Ltd ABN 13 007 567 222, RLA 230557, Construction Services Australia Pty Ltd ABN 99 007 641 787, Building License G8969.